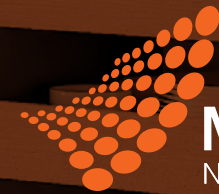


# StyleLite®

TruGloss and TruMatte

Superior indoor cabinetry



**MULFORD**  
NEW ZEALAND  
*delivering solutions*

# StyleLite<sup>®</sup> With TruColor's Advanced Multilayer UV Barrier Technology

StyleLite is the perfect material to create superior kitchen and bathroom cabinets, bespoke furniture, and feature panels.

Below: Kitchen featuring StyleLite Oceanic and Arctic TruMatte cabinetry.

It's an ideal solution for cabinetmakers, builders, architects and discerning homeowners looking to add the perfect finish to their creations.

## Superior Features

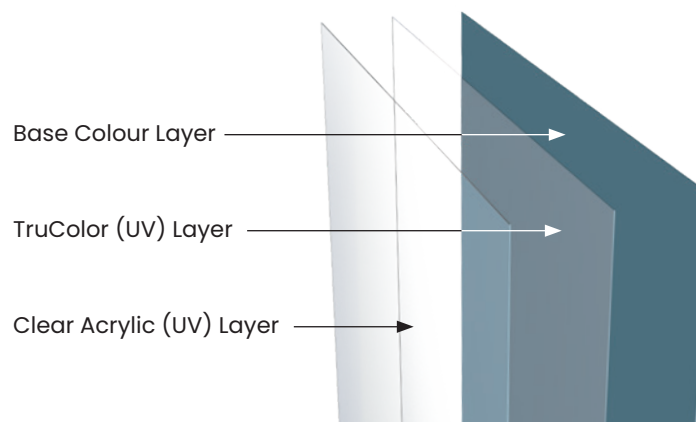
- Available in TruGloss and TruMatte finishes
- Very easy to clean and maintain
- UV and colour change protected
- Durable surface that won't chip, crack or delaminate
- Fingerprint resistant (TruMatte)
- Repairable surface (TruGloss)
- Up to 10 Year residential indoor warranty

## Applications

- Kitchen and vanity cabinets
- Office furniture and partitions
- Caravans and RV joinery
- Retail displays

TruColor is the latest and most advanced StyleLite sheet technology.

TruColor features a unique combination of clear and coloured layers that are fused together during manufacture using a sophisticated multilayer die and triple extrusion process.



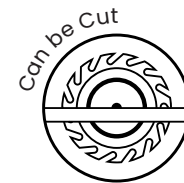
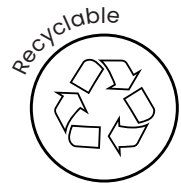
Above: TruColor features a unique three layer combination



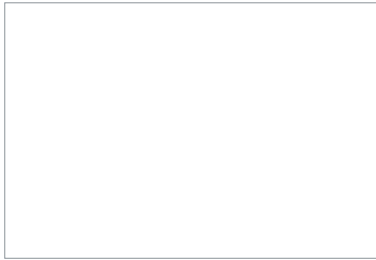




Above: Kitchen featuring StyleLite Arctic TruMatte and TruNatur Natural Oak cabinetry.



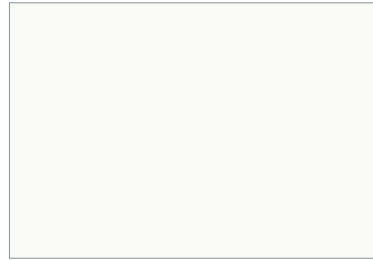
# TruGloss



Arctic



Brilliant Pearl (Metallic)



Alabaster



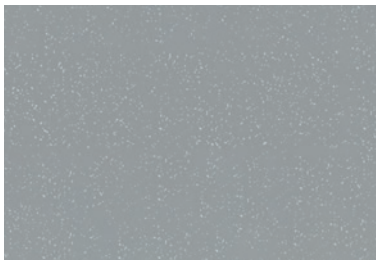
Champagne (Metallic)



Ash



Dove



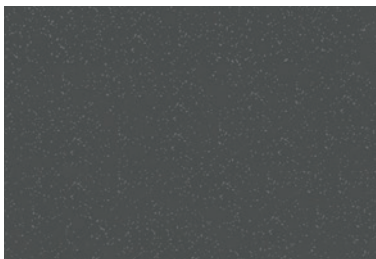
Silver (Metallic)



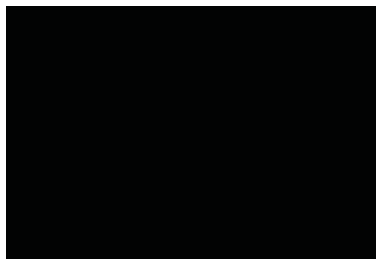
Slate



Charcoal



Graphite (Metallic)



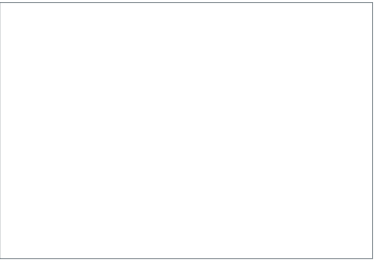
Carbon

Due to the nature of the printing process, the colours and images depicted throughout this brochure may vary compared to the actual finished products' colour. Images and colours are to be used as a guide only.

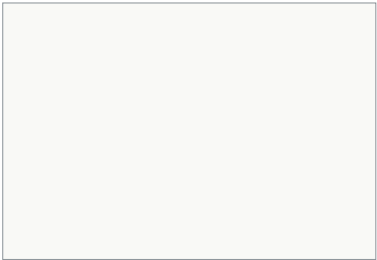


Above: Kitchen featuring StyleLite Arctic TruGloss cabinetry.

# TruMatte



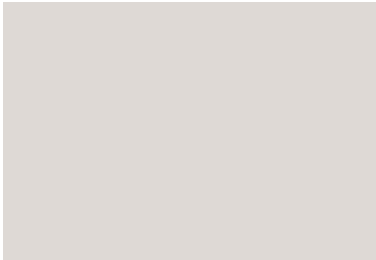
Arctic



Alabaster



Cottonseed



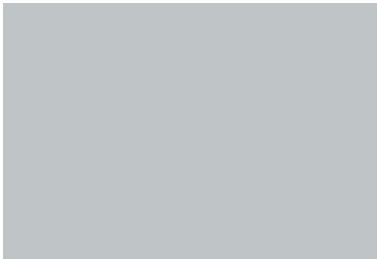
Shell



Jura



Ash



Mountain



Dove



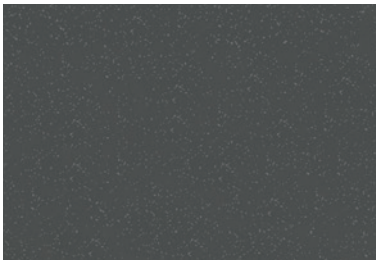
Shade



Slate



Charcoal



Graphite (Metallic)



Oceanic



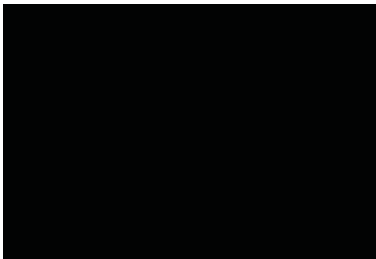
Rainforest



Cinnabar



Mariana



Carbon



Above: Arctic and Carbon TruMatte



# TruNatur

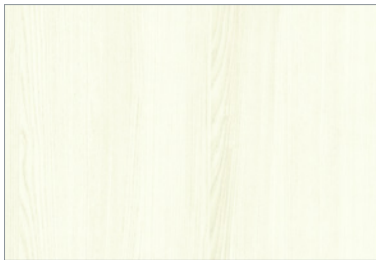
## Premium Polymer Veneer

StyleLite TruNatur range of polymer veneers are perfectly suited to compliment the StyleLite Acrylic decors. TruNatur features a carefully selected suite of natural woodgrains that have been further enhanced with a broad range of

tones from light and classic through to dark rich tones. Each TruNatur panel features a pre-finished, highly durable, lightly embossed surface that delivers the luxurious look and feel of natural smooth sanded solid timber.



### TruNatur – Colour Range



Winter Ash



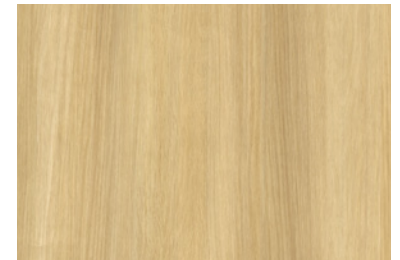
Misty Oak



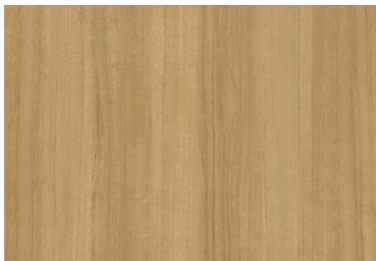
Hazelnut Oak



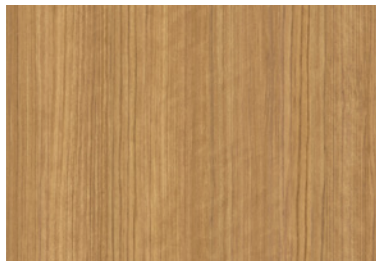
Coastal Ash



Natural Oak



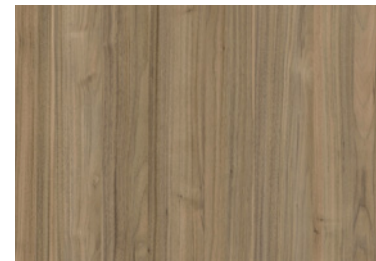
Cinnamon Teak



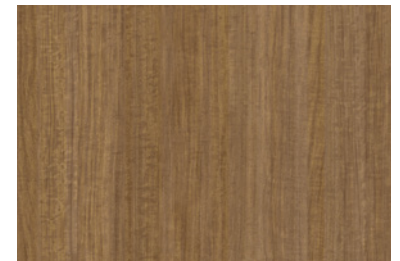
Blackbutt



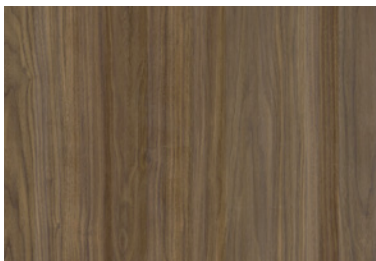
Weathered Oak



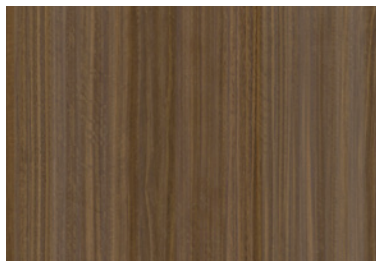
Tropic Walnut



Spotted Gum



Classic Walnut



Rich Eucalypt



Charred Ash



Cinder Oak

Due to the nature of the printing process, the colours and images depicted throughout this brochure may vary compared to the actual finished products' colour. Images and colours are to be used as a guide only.

## Design Guidelines

StyleLite is designed for use in vertical surface applications only. Stylelite is not designed for structural applications.

For full details, refer to the Installation and Specifications Guide, available on [www.stylelite.net](http://www.stylelite.net), or talk to your local distributor.

## The Environment

None of the colour pigments used in StyleLite contain heavy metals, such as lead or cadmium. StyleLite is also recyclable – making it the best choice for modern, eco-friendly interiors.

- GreenTag Platinum Health Rated

- GreenTag PHD recognized by WELL™ & LEED\* Material Transparency & Optimization credits
- Meets Green Star\* 'Buildings v1.0' as Recognized for Responsible Finishes

## Edge Finishing

All StyleLite compatible Edge Band is of premium quality and offer high resistance to heat, abrasion, impact and colour fade.

## Guaranteed Quality

StyleLite Panels are created by laminating StyleLite Acrylic Sheet front and back to a variety of substrates using our premier polyurethane (PUR) hot melt bonding system. This system produces a ripple-free finish that is highly resistant to heat, moisture and environmental change over time.

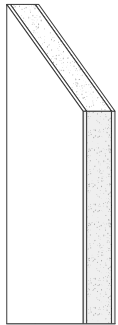
EGR Decor production facilities are recognised for achieving ISO9001 Quality Management certification for their consistent performance and quality systems.

## Care & Maintenance

StyleLite products can be cleaned simply using wet microfibre cloth or chamois with non-abrasive soap.

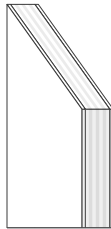
TruGloss's ultra high gloss finish provides a mirror like appearance which can be refinished using a good quality liquid polish. (Pencil Hardness 4H)

TruMatte's smooth, matte finish provides increased scratch resistance over the gloss surfaces and is highly fingerprint resistant. (Pencil Hardness 6-7H)



### StyleLite MDF Panels

Regular StyleLite panels, suitable for a range of general purpose applications. Uses premium quality moisture-resistant MDF, rated to formaldehyde emissions standard E0 or TSCA TITLE VI. Perfect for kitchen and vanity doors and panels, furniture, hinged wardrobe doors, and general cabinetry. Double sided and single sided (with colour matched backer) options available in both TruGloss and TruMatte.



### StyleLite Lightweight Plywood Panels

Lightweight panels, perfect for when weight is a consideration. Uses high quality MR lightweight plywood. Great for interior fit out for caravans and RVs – from furniture and kitchen cabinetry, to vanity doors and panels. Available in both TruGloss and TruMatte.



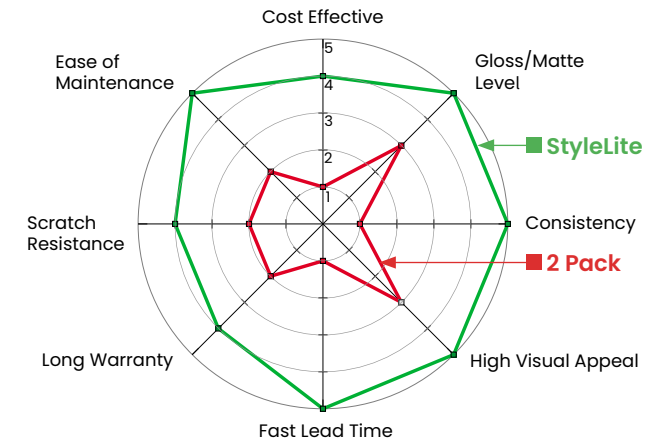
### StyleLite Sheet

StyleLite Sheet is manufactured from high quality acrylic-capped ABS, and features reverse-side treatment for superior bonding performance. StyleLite Sheet is provided ready for manual or machine lamination onto a variety of substrates.

Product	Substrate	Sheet Size (nom)	Region	Weight	Finish
StyleLite MDF Panels*	MR MDF E0	2440 × 1200 × 18mm	Global	13.5kg/m <sup>2</sup>	TruGloss and TruMatte
	MR MDF E0	3000 × 1200 × 18mm	Global	13.5kg/m <sup>2</sup>	TruGloss and TruMatte
Lightweight Plywood Panels†	Lightweight Plywood	2440 × 1220 × 14mm	Global	7kg/m <sup>2</sup>	TruGloss and TruMatte
	Lightweight Plywood	2440 × 1220 × 17mm	Global	8kg/m <sup>2</sup>	TruGloss and TruMatte
StyleLite Sheet	StyleLite Sheet		Global	1.08kg/m <sup>2</sup>	TruGloss
	StyleLite Sheet		Global	0.86kg/m <sup>2</sup>	TruMatte

\* Other Substrates and panel sizes available on request.

## StyleLite v 2 Pack Comparison



# EGR Decor

## Redefining Decorative Solutions

EGR Decor is a global supplier of high quality, decorative vertical surfaces for the building industry. We have built upon a 50-year heritage of manufacturing, design, and technology to become experts in gloss and matte interior and exterior cabinetry and offer designers, fabricators, and homeowners a contemporary range of decorative panelling solutions for commercial and residential applications.

Manufactured by

**EGR**  
**DECOR**

## Specialty Range

A specialty range of colours that can be ordered in. Available in both TruGloss and TruMatte, as below. Subject to MOQs

### TruGloss



Lavato Oak (Woodgrain)



Sienna Teak (Woodgrain)



Tierra Elm (Woodgrain)

### TruMatte



Tierra Elm (Woodgrain)



Rustic (Woodgrain)



Misty Mira



Wired Mercury



Wired Zinc



Pewter









Calacatta

Proudly distributed by:



**MULFORD**  
**NEW ZEALAND**  
*delivering solutions*

[mulfordplastics.co.nz](http://mulfordplastics.co.nz)

- |  |                |
|--|----------------|
|  Auckland North | +64 9 442 4051 |
|  Auckland South | +64 9 573 0145 |
|  Hamilton       | +64 7 850 4900 |
|  Christchurch   | +64 3 365 7557 |
|  Wellington     | +64 4 589 0221 |
|  Dunedin        | +64 3 471 9233 |

1. EGR expressly disclaims any representations or warranties of any kind, whether express or implied, as to the accuracy, currency, completeness and/or the merchantability or fitness for a particular purpose of any information contained in or provided via this documentation and/or any service or product described or promoted in this document. 2. It is the customer's responsibility to thoroughly examine the product using a qualified person, to determine whether it is suitable for the application it was purchased for. 3. The receiver of our products is fully responsible to check and to take into account possible third party's patent rights, as well as the existing laws in the country of installation prior to installing our product. 4. No liability may be derived from these images or statements nor from our free technical advice. 5. EGR reserves the right to change, add or remove colours or product without notice. 6. EGR Decor and EGR are registered trademarks. 7. Images and colours should be used as a guide only. 8. Ten Year Indoor Warranty: The EGR Decor warranties cover faulty materials for the periods specified on the relevant product warranty documents. The EGR Decor warranties commence from the date of sale by EGR, they are not transferable and are subject to the terms, conditions and exclusions contained within those warranties.

© Copyright 2024 / Patent Pending Oakmoore Pty Ltd trading as EGR.